

**Norridge School District 80**  
*Grade Center Curriculum Plan*

By

Dr. Paul O'Malley

*Superintendent for Schools*

# ***Grade Center Curriculum Plan:***

## **Scenario 4 Transitional Schedule**

- “ Transitional Schedule for Scenario 4
  - . *Current proposal on the 2017-2018 Deficit Reduction Plan (Updated 2/14/2017) would maintain Kindergarten program and **eliminate** Art, Athletics, Music, Industrial arts, et. al. resulting in efficiencies of \$773,100*
    - “ *School day will begin at 8:10am and end at 2:30pm*
    - “ *PLC committees would meet from 2:35pm to 3:30pm daily*
  - . *If the district added back Art and Music, the expenditure reductions would be \$535,100 (or \$214,900 short of expected reductions)*
    - “ *School day will begin at 8:15am and end at 3:00pm*
    - “ *PLC committees would meet from 3:05pm to 3:30pm daily*
  - . **Elimination of Early Release Wednesdays**

# ***Grade Center Curriculum Plan:***

## **Scenario 5 Transitional Schedule**

### “ Transitional Schedule for Scenario 5

- . *Current proposal on the 2017-2018 Deficit Reduction Plan (Updated 2/14/2017) would maintain Kindergarten, Art, Athletics, Music and **eliminate** Industrial arts, et. al. resulting in efficiencies of \$753,200*

“ *Giles Elementary School will begin at 8:10am and end at 2:55pm for grades 5-8*

“ *Leigh Elementary School will begin at 8:20am and end at 3:05 pm for grades K-4*

“ *PLC committees would meet from 3:00pm to 3:30pm daily at Giles Elementary School*

“ *PLC committees would meet from 3:10pm to 3:30pm daily at Leigh Elementary School*

- . Elimination of Early Release Wednesdays

# ***Grade Center Curriculum Plan:***

## **Programs and Initiatives for For Future Years**

- “ Future Initiatives and Goals for Norridge School District 80 Students
  - . *Curriculum review cycle (CRC)*—Profession Based, Inquiry Based Learning and implementing real-world interdisciplinary projects that follow industry trends and market changes
  - . *Articulation*—Greater continuity of instruction between high school, junior college to assure Career readiness first, then College readiness
  - . *Serviced Based Graduation*—Students in 7<sup>th</sup> and 8<sup>th</sup> grades will work on two-year project with non-profit organization to fulfill graduation requirements in addition to course work
  - . *eLearning*—Online Learning for Students in 5<sup>th</sup> through 8<sup>th</sup> grades will be required to take online courses offered through various platforms with the goal of taking college level course by 7<sup>th</sup> grade

# ***Grade Center Curriculum Plan:***

## **Programs and Initiatives for For Future Years**

- “ Future Initiatives and Goals for Norridge School District 80 Students
- . *Extension of World Language program*—Mandatory one foreign language Spanish for **ALL** students starting in grades 5-8, which will be treated as a core course similar to ELA, Social Studies, etc.
  - . *Gifted Program*—Flexible scheduling for all grade levels i.e. students performing at designated percentile bandwidths to ensure students are in the most challenging environment regardless of grade level
  - . *ELL*—K-8<sup>th</sup> grades are in the *least restrictive environment* (LRE), creating a more robust program to assure compliance with state and federal standards
  - . *Consolidation of Services*—Sharing services with the High School to maximize the operational economies of scale e.g. Ridgewood High School has designated a director position to *assist Norridge and Union Ridge in aligning curriculum*

# ***Grade Center Curriculum Plan:***

## **Programs and Initiatives for For Future Years**

- “ Future Initiatives and Goals for Norridge School District 80 Students
  - . *World Language program*—Students who test out of Spanish II will be eligible for Honors Spanish at Ridgewood High School (RHS) i.e. Norridge School District 80 (RSD 80) students can take classes at RHS while attending NSD 80
  - . *Author Adoption Program*—In partnership with Eisenhower Library, better alignment of monthly Adopt-An-Author elementary programs to excite all students about reading and writing through the use of non-fiction and fiction authors (and direct contact with the authors in person)
  - . *Special Education*—Pre-K-8<sup>th</sup> grades will **all** have on demand co-teaching model to reduce number of outplaced students, increase capacity of serving special education needs for students and ensure mainstreaming in the least restrictive environment (LRE) (***Scenario 5 only***)

# ***Grade Center Curriculum Plan:***

## Programs and Initiatives for For Future Years

- “ Future Initiatives and Goals for Norridge School District 80 Students
  - . *Continuity of Instruction*—The grade level organization allows for more continuity of instruction and mastery of curriculum e.g. 3<sup>rd</sup> grade Professional Learning Community can meet ***daily*** and design and redesign curriculum to assure equity for ***every*** student
  - . *Curriculum Standards*—Grade organization will provide a greater opportunity to align Curriculum Review Cycle for educational effectiveness i.e. the curriculum standards will be effectively applied as it mirrors the state standards by design
  - . *Competency Based Learning Program*—Investigate, research and implementation of uniform standards based grading throughout the district over a two-year period in conjunction with updating homework practices
  - . *Continuous Improvement Practices*—Focusing on math and science over a two-year period e.g. *No Math Problem Left Behind Program (NMPLB)*, requiring math homework be completed by the end of the school day

# Striving for Excellence: Leigh Test Fit

THE PROJECTED NUMBER OF CLASSROOMS IN K-4 GRADE CENTER STRUCTURE REQUIRES 24 CORE CLASSROOMS AND 3 SPECIAL ED ROOMS

1ST FLOOR TOTAL	15	DO NOT USE INDUSTRIAL ARTS
2ND FLOOR TOTAL	12	
TOTAL AVAILABLE	27	

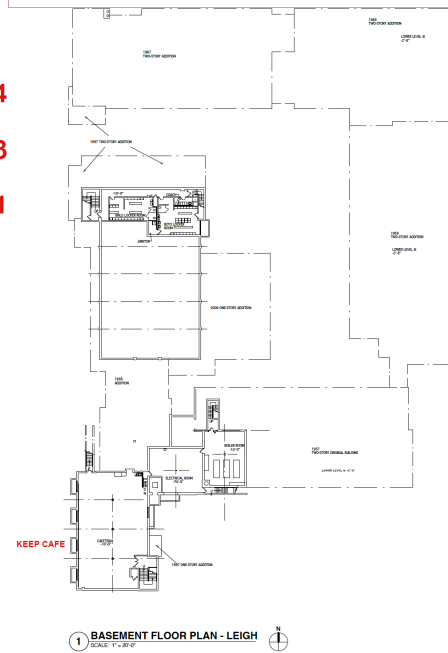
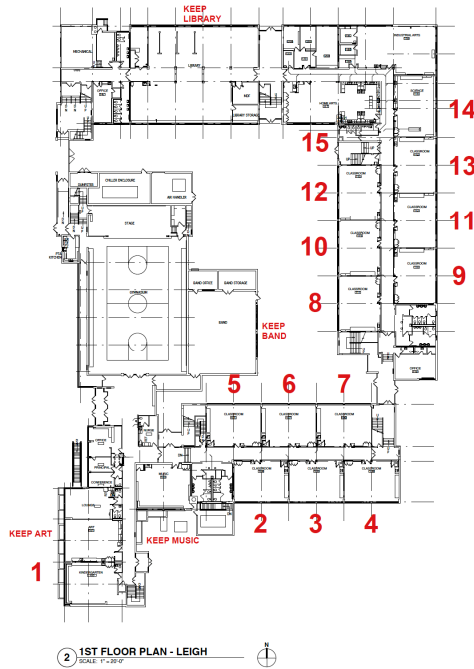
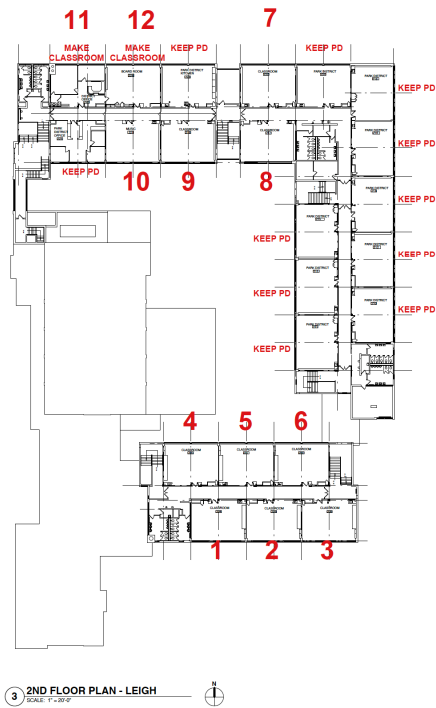
KEEP PARK DISTRICT 11 CLASSROOMS SPACES

IF OTHER CLASSROOMS ARE REQUIRED, HERE ARE OPTIONS; THAT COULD BE USED OR COMBINED.

A) TAKE BACK 1 OR MORE PARK DISTRICT ROOMS (+1 OR MORE)  
COST: RENT

B) SPLIT EXISTING HOME-EC  
CONSTRUCTION COST = \$10,000 ~ \$15,000 (+1)

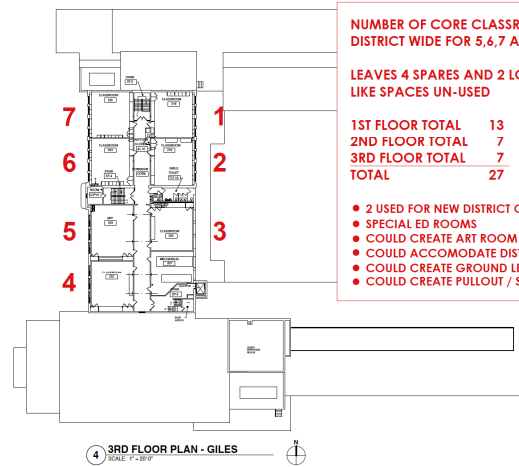
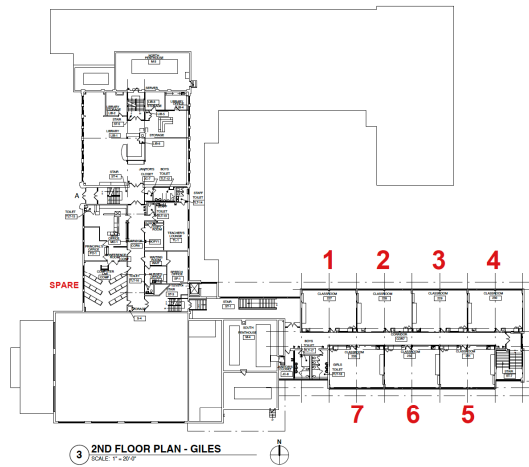
C) SPLIT END RENOVATE EXISTING INDUSTRIAL ARTS (+2)  
COST = \$40,000 ~ \$60,000



## TEST FIT



# Striving for Excellence: Giles Test Fit

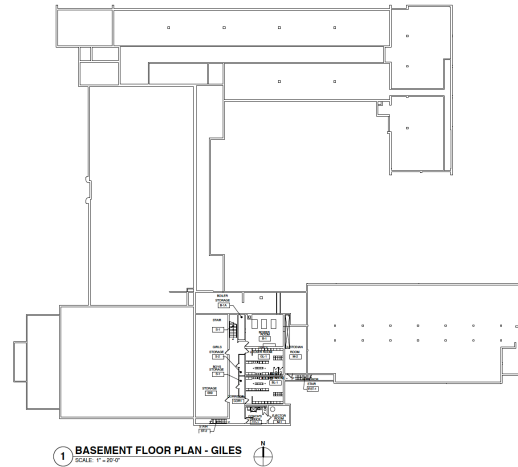
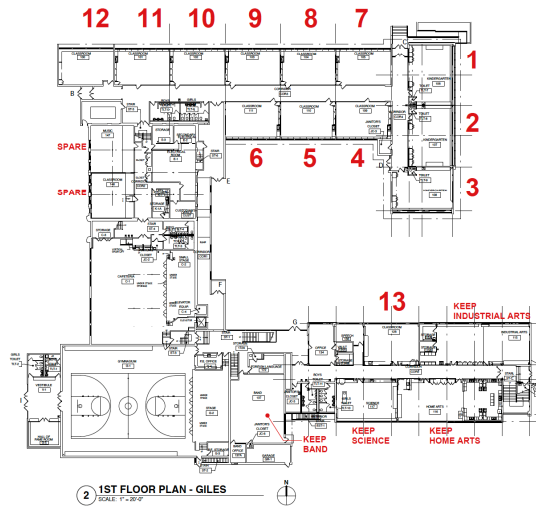


NUMBER OF CORE CLASSROOMS CURRENTLY USED DISTRICT WIDE FOR 5, 6, 7 AND 8TH GRADE = 23

LEAVES 4 SPARES AND 2 LOWER LEVEL CLASSROOM LIKE SPACES UN-USED

1ST FLOOR TOTAL	13
2ND FLOOR TOTAL	7
3RD FLOOR TOTAL	7
<b>TOTAL</b>	<b>27</b>

- 2 USED FOR NEW DISTRICT OFFICE
- SPECIAL ED ROOMS
- COULD CREATE ART ROOM
- COULD ACCOMMODATE DISTRICT OFFICE
- COULD CREATE GROUND LEVEL STORAGE
- COULD CREATE PULLOUT / SMALL GROUP ROOMS



**TEST FIT**

## ***Grade Center Curriculum Plan:***

# Questions